



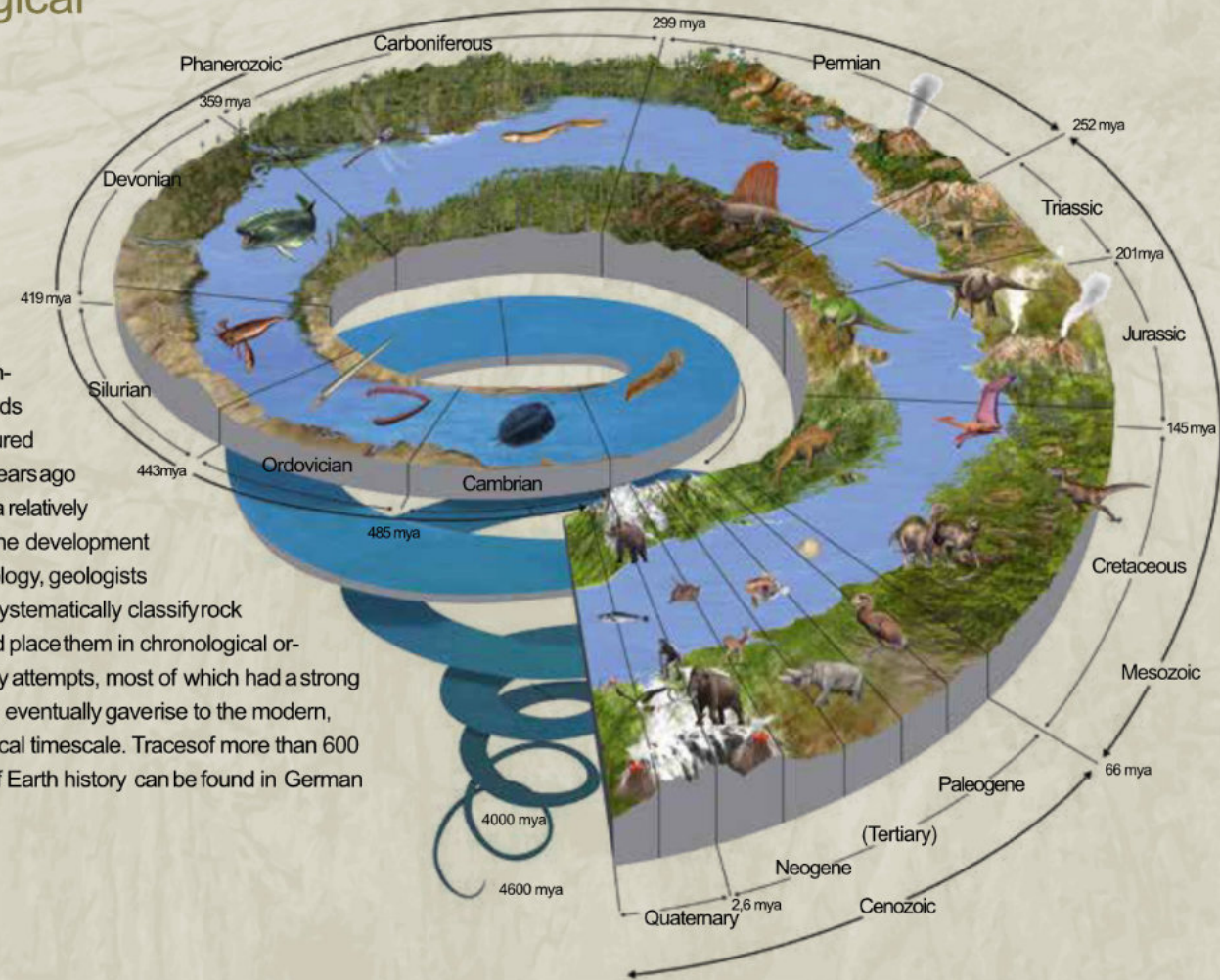
EARTH HISTORY SEE AND EXPERIENCE UNDERSTAND



National and
UNESCO Global Geoparks
in Germany

Geological time

By human standards, Earth history spans unimaginably long periods of time, measured in millions of years ago (mya). Even at a relatively early stage in the development of modern geology, geologists attempted to systematically classify rock formations and place them in chronological order. These early attempts, most of which had a strong regional focus, eventually gave rise to the modern, global, geological timescale. Traces of more than 600 million years of Earth history can be found in German geoparks.



in Germany

National and UNESCO Global Geopark

Discover, experience, learn	
-Whatgeoparkshavetooffer.....	4
1 GeoparkEmsland.....	10
2 NatureandGeoparkTERRA.vita	12
3 GeoparkHarz·BraunschweigerLand·Ostfalen	14
4 GeoParkRuhrgebiet.....	16
5 GeoParkGrenzWelten.....	18
6 GeoParkKyffhäuser	20
7 GeoparkPorphyrland.SteinreichinSachsen.....	22
8 GeoparkMuskauerFaltenbogen/ Łuk Mużakowa	24
9 GeoparkThüringenInselsberg–Drei Gleichen.....	26
10 GEOPARKSachsensMitte	28
11 GEOPARKWesterwald-Lahn-Taunus	30
12 GeoparkVulkanregionVogelsberg.....	32
13 NatureandGeoparkVulkaneifel.....	34
14 GeoparkLaacherSee.....	36
15 GeoparkSchieferland.....	38
16 GEOPARKBayern-Böhmen	40
17 Geo-NaturparkBergstraße-Odenwald	42
18 GeoparkRies	44
19 GeoparkSchwäbischeAlb	46
Geoparks'ConservationMandate	48



Germany is among the European countries with the most diverse geology: ancient mountains, deserts, seas, volcanoes and meteorite craters. While the north is characterized by the Ice Age and the advance of massive glaciers, formations from the Mesozoic Era can be found in the south. In the low mountain ranges, rocks from Paleozoic to the Cenozoic period are often found in close proximity.

If we want to understand why the landscape, the flora and fauna, our towns and villages look so different, we need to know about their origins and formation. Geological processes are the starting point for all developments and also, ultimately, influence us humans, because our knowledge, experiences, culture and way of life are shaped by the regional landscape. Geoparks provide insights into the geological past and explain how our planet functions and how animals, plants and climate have changed over millions of years. In particular, geoparks emphasize the connection between their geological heritage and the regional cultural, economic and social history. In this diversity, each geopark has its own stories, focal points and windows into the Earth's history with extensive information and educational offerings.

NATIONALER GEOPARK Currently, 19 geopark regions in Germany bear the "National Geopark" quality seal, a mark of excellence established in 2002 and reviewed every five years by an expert commission. All German geoparks work together on issues such as the protection of important geological and natural heritage sites, regional development, education for sustainable development and the implementation of sustainability goals.

unesco Global Geopark Eight of these German geopark regions have also been distinguished as UNESCO Global Geoparks. They are part of an international geopark network of 213 regions in 48 countries at the present time. With their holistic approach, UNESCO Global Geoparks act as model regions for the Global Agenda 2030 at the international level. They place particular emphasis on active networking and international partnerships. In doing so, UNESCO Global Geoparks promote an appreciation of global interrelationships and contribute to peace and international understanding. The certification is reviewed by UNESCO every four years.

No two geoparks are alike – the geoparks in Germany are eager to be discovered!

come and experience

Guided tours museums information centers

Discover, experience, learn



Geoparks are worlds of unique landscapes. Rugged rock formations meet blooming mountain meadows, rushing waters flow through gentle valleys, barren scree slopes contrast with dense forests, and deep gorges meet species-rich river floodplains. In between, fortresses and castles perched on mountains, ornate church portals, stone houses and slate roofs testify to the millennia-old culture and use of Earth's geological treasures. Caves, mines and quarries reveal the world beneath our feet.

Geoparks offer an exciting journey into the origins and ongoing transformation of our living world, as well as our cultural and industrial heritage.

Curiosity welcomed, hands-on encouraged! A lot is possible in the geoparks: relaxing in nature while hiking, cycling or swimming in a forest lake, exploring geology, adventuring in caves, facing athletic challenges while climbing, trying out old stone-working techniques or experiencing historic mining.

Trained geopark tour guides point out interesting sites, exceptional views and exciting trails. Their stories bring the formation and transformation of the landscape to life. For those exploring on their own, a wealth of knowledge can be found in the information centers and museums, on geopark routes and at discovery points.



Geo-routes

Geo-trails Geo-paths

Experience nature by hiking and cycling



Themed cycling and hiking tours lead through ancient mountains, deserts and seas, past volcanoes and meteorite craters. Become immersed in the long-ago worlds of dinosaurs and ancient horses, follow the footsteps of the stone carver, and encounter typical regional villages characterized by natural stone.

Geoparks offer extraordinary experiences for nature enthusiasts, knowledge seekers, families, hiking aficionados and fans of leisurely or challenging bike rides. After eventful excursions, visitors can enjoy regional specialties and culinary delights at local restaurants and inns.



Healthy Regionality
mindful
relaxed and enjoyable



Encounter participate
Let's get started! experience

Geopark tours are also journeys through local agriculture, cuisine, crafts, customs and traditions. Enjoyment means experiencing regional culinary products. This includes honey, rustic farmhouse bread, homemade jam, meat and sausage products, cheese made from pasture-based milk, juices from meadow orchards, beer, wine and even high-proof spirits – this is geology you can taste. Climate and soil dictate what can be grown in the regions, while minerals in the soil influence flavor and growth.



Being out and about in nature means breathing fresh air, listening to the sounds of nature and experiencing the landscape. Clear springs are popular places to cool off, and you can't help but be amazed by thundering waterfalls. Treasures from the depths of our Earth, such as healing, mineral or thermal water, are good for body and soul. Relaxation and enjoyment can be so multi-faceted in geoparks.



The National and UNESCO Global Geoparks in Germany introduce themselves on the following pages. Further information, as well as visitor and program offerings, can be found on their respective websites.



Water – Moors – Megaliths

Renatured Dalum-Wietmarscher Moor in latesummer.

Geopark Emsland

Expansive moors have always fascinated people – and the Geopark Emsland delves into the recent geological history of what was once Germany's most moor-rich region. The transformation from primeval to cultural landscape can be discovered particularly on themed cycling routes. Imposing dune fields and mighty erratic boulders are remnants of the last Ice Ages. Incorporated into prehistoric megalithic tombs, the giant stones of Scandinavian origin seem almost mythical. Those wishing to dive even deeper into geological history will find the largest oil production area on the German mainland within the Geopark Emsland.



The river Ems near Meppen with riverbank dunes.

Megalithic tomb "VolbersHünensteine" in Hüven.

TERRA.
vita

NATUR- UND GEOPARK
NÖRDLICHER TEUFORBERGER WALD
WIEHENGEBIRGE, OSNABRÜCKER LAND E.V.



2



www.geopark-terravita.de

+49 54150142 17

info@geopark-terravita.de

Piesberg Culture & Landscape Park, Dinosaur Tracks Bad Essen-Barkhausen, Silberseestollen, Treetop Path Bad Iburg, Dörenther Cliffs, Kleinenbremenvisitor mine, Varus Battle Kalkriese



I like being outside!®

Expansive views: Piesberg Culture and Landscape Park.

Nature and Geopark TERRA.vita

Former bog woodlands in quarries, tropical seas in forested mountains and tidal flats underground – in the Nature and UNESCO Geopark TERRA.vita, 300 million years of geological heritage can be discovered – quietly admired or actively enjoyed! The TERRA tracks offer 84 options for short walks, while five long-distance trails provide days of relaxation. The 16 nature and geology trails provide information about regional geological history, habitats and culture. In the museums, visitor mines and on the treetop path, visitors can encounter Romans and Germanic tribes, take elevator rides deep underground and hike through the treetops.



Deep insights:
The Silberseestollen visitor mine.



Mystical views: Geosite "Crouching Woman" at the Dörenther Cliffs.



The classic heartland
of geology

For thousands of years, the "Old Man of the Mountain" has gazed somewhat sullenly into the Oker valley.

Geopark Harz · Braunschweiger Land · Ostfalen



The Kaiserpfalz Werla royal castle was a residence for great kings and emperors of the Middle Ages.

According to legend, witches and devils met at the Brocken, giving their names to the rock formations.



The largest geopark in Europe boasts a multitude of geosites. Archeological, historical and cultural objects are also significant: Mystically uplifted rock formations were already places of worship in pre-Christian times. Evidence of mining connects the history of the Earth with the lives of people in today's Geopark area, through which the "Green Belt" also runs.

To grasp it all, a visit to the highest peak in the Harz – the Brocken – is worthwhile. Equally adventurous are glimpses into the underground world of show caves, visitor mines and experiential quarries.



The Ruhr, land of resources – experience geology



A genuine coal seam can still be discovered today in the Witten Ruhr Valley.

GeoPark Ruhrgebiet

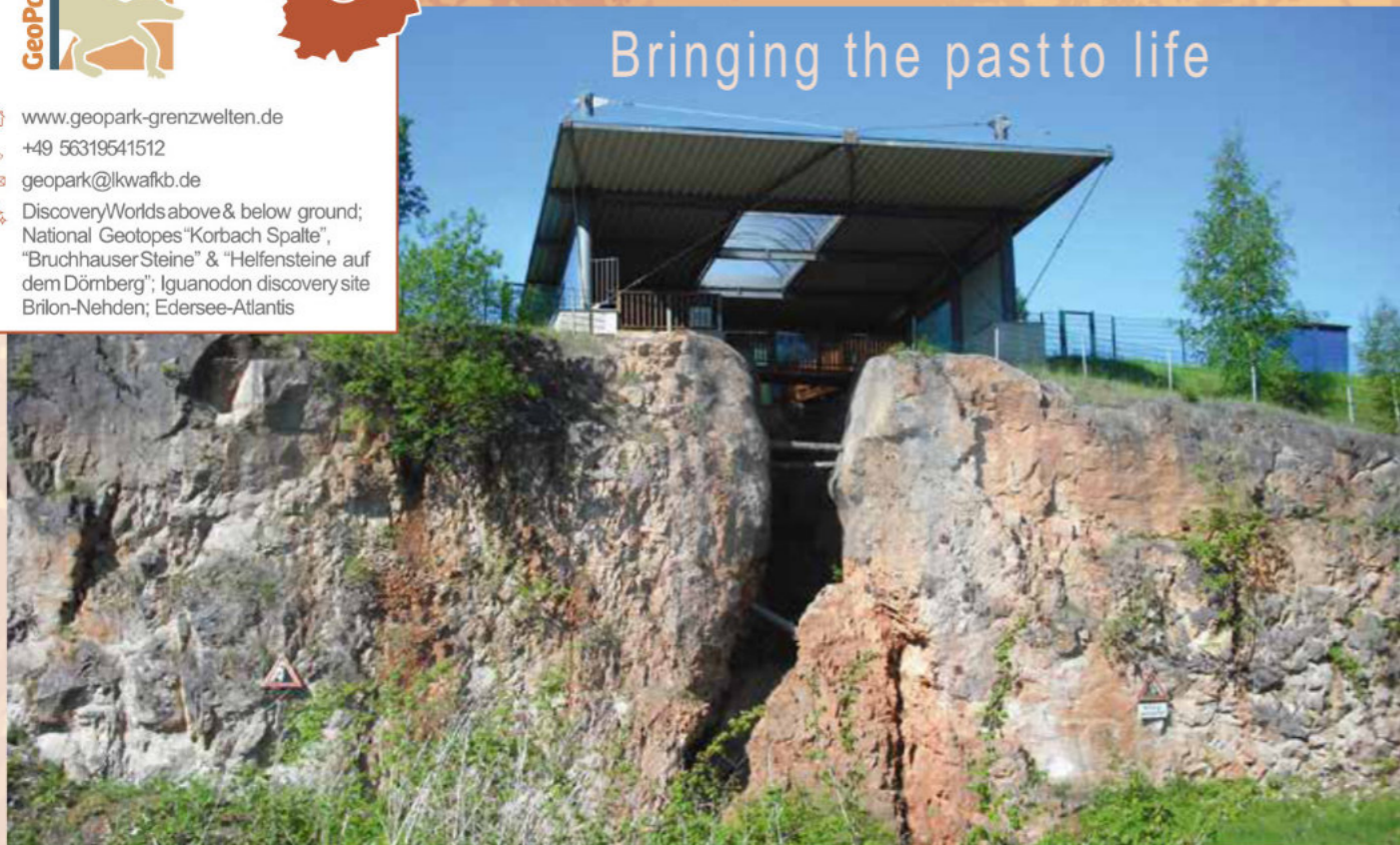
Historical quarries, underground cave worlds and bizarre karst landscapes meet slag-heap panoramas, industrial-heritage treasures and a vibrant metropolitan region in the GeoPark Ruhrgebiet. Here, 400 million years of Earth's history invite you to time travel through the past of the former mining area. Whether by bike, on foot or in Information Centers, in the GeoPark you can follow the traces of "black gold" through the Ruhr Valley, learn about the treasures the Rhine still deposits on its banks or why ancient sea mud "lands" on roofs along the Lippe.

Graf Wittekind visitor mine in Dortmund.



Fascinating calcareous formations await visitors in the self-illuminated Dechenhöhle cave.

Bringing the past to life



The fossil site and National Geotope "Korbacher Spalte" at the center of the Geopark.

GeoPark GrenzWelten

Encounter 400 million years of Earth history, a prehistoric fissure filled with fascinating fossils and an exciting journey blending hiking, science and fun: In the National GeoPark GrenzWelten, curious nature lovers can delve deep into the geology, history and myths of the region's past and uncover true treasures in expansive landscapes with fabulous views.

In a landscape of low mountain ranges between North Hessen and North Rhine-Westphalia, the GeoPark GrenzWelten is dedicated to different sections of Earth history and cultural landscapes.



The sandstone rock "Bildstein" near Naumburg in the geopark region Wolfhager Land.



Discover geological diversity

Above the clouds—honoring Emperors Wilhelm I and Barbarossa, the monument stands on the summit of the Kyffhäuser Mountain.

GeoPark Kyffhäuser

The Kyffhäuser Mountains offer sensational geological diversity within a small area, featuring rocks from times long past. The steep northern side is covered in dense deciduous forest, while the southern side reveals an unusual gypsum karst landscape with a steppe character as it gently flows into the countryside. Explore 550 million years of Earth history on foot or by bike along eleven GeoPaths. Spectacular caves and salt mines offer glimpses into the fascinating world underground, while historical settlements bear witness to the region's settlement and economic history, which has been shaped by geology since the Stone Age.



Emperor Redbeard's empire—the Barbarossa cave, Europe's unique anhydrite cave.



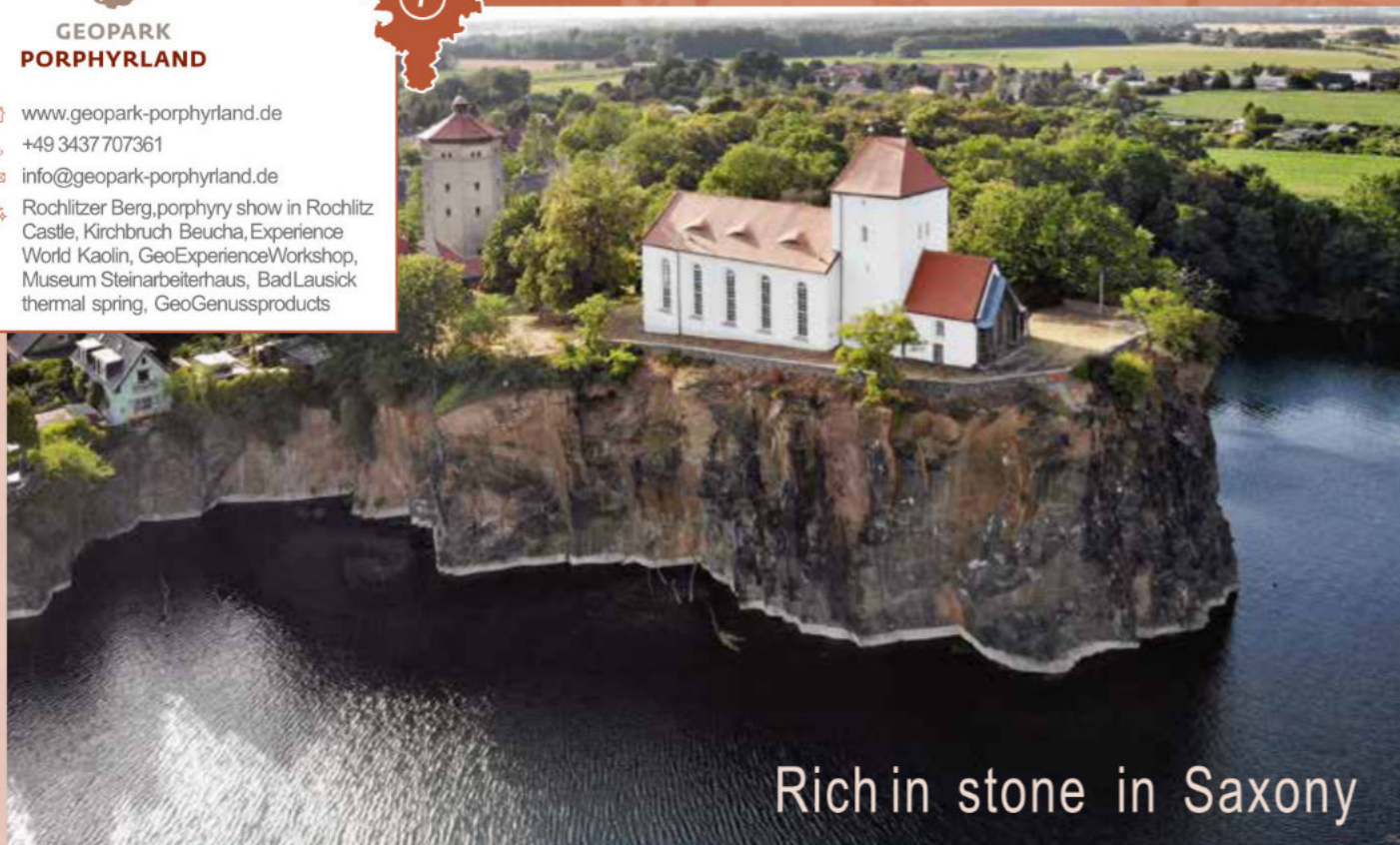
**GEPARK
PORPHYRLAND**

www.geopark-porphyryland.de

+49 3437 707361

info@geopark-porphyryland.de

Rochlitzer Berg, porphyry show in Rochlitz Castle, Kirchbruch Beucha, Experience World Kaolin, GeoExperienceWorkshop, Museum Steinarbeiterhaus, Bad Lausick thermal spring, GeoGenussproducts



Rich in stone in Saxony

National Geotope Kirchbruch Beucha with church.

Geopark Porphyryland

Around 290 million years ago, two supervolcanic events created a layer of various porphyry rocks over 600 meters thick in what is now the Geopark Porphyryland. The people of the region have used this geological treasure for centuries. Proud castles and palaces sit enthroned on rocky outcrops, and the unique Rochlitz porphyry tuff adorns monasteries, churches and entire towns with its red color. Geological, cultural and industrial heritages are closely intertwined in Porphyryland. The mountain ridges offer views of the Mulde valley, charming old quarries and the Saxon fruit country. It's a fascinating blend of landscape and cultural experiences!



Gleisberg quarry on Rochlitzer Berg, extraction site of Rochlitz porphyry tuff — the first IUGS heritage stone in Germany.



Wechselburg Basilica.



www.muskauer-faltenbogen.de

+49 35600 365601

info@muskauer-faltenbogen.de

Old Brickyard Visitor Center Klein Kölzig & Cultural & Educational Center Łeknica, Babina former mine, Muskau Forest Railway, Erratic Boulder Park Nochten, GlassMuseum Weißwasser/O.L.



Amoraine amphitheater in the heart of Europe

Colorful post-mining lakes in former open-cast mines.

Geopark Muskauer Faltenbogen / Łuk Mużakowa

This impressive cultural and former mining landscape spans Germany and Poland. The Ice Age left behind a gigantic horse-shoe-shaped glacier imprint, which has been transformed by renowned landscape designers such as Prince Pückler. Geotourism paths and themed bike routes trace the ever-changing region along colorful waters, sunken forests and notable sites of the glass and ceramics industry. Shady stream valleys, river meadows and diverse forest and moorland landscapes are home to an unexpected variety of species.



Observation tower at Lake Felix.



In the foot steps of Pangaea

- www.thueringer-geopark.de
- +49 3623 332014
- info@thueringer-geopark.de
- GeoMuseum Ohrdruf, Sauria Discovery Trail, Badlands below Drei Gleichen castles, show caves & tourist mines, Grosser Inselsberg, Seeberg, Vulkanstiege, mining trails, tropical reefs, castles



Track slabs and original skeleton Ornithomimus of the Stiftung Schloss Friedenstein Gotha.



Illustration: Saurian skeletons "Tambacher Liebespaar" (Seymouria sanjuanensis).

Geopark Thüringen Inselsberg – Drei Gleichen

Through the spectacular fossil finds there, the wooded ridges and sunny castle hills tell the exciting story of the evolution of dinosaurs on the supercontinent Pangaea.

Romantic rock gates, cool mountain streams, a tropical island, extinct volcanoes and healing springs – these landscape jewels can be explored on numerous GeoRoutes with a total length of over 500 km. The Geo- and Pleasure Trail offers magnificent views as well as culinary delights.



Scientific excavation at the Bromacker primeval dinosaur site.

The Wachsenburg is the best-preserved of the Drei Gleichen castles.



Getting Saxony's
rocks rolling

Klingenberg Dam.

GEOPARK SachsensMitte

The Tharandt Forest Caldera, the former coal and uranium ore mines in the Döhlener Basin and the high-medieval silver and tin mines in the Eastern Ore Mountains are among Saxony's most important geological treasures. In the Geopark SachsensMitte, outcrops of all geological eras can be reached on foot. Numerous fascinating geosites, picturesque reservoirs and a network of clearly signposted hiking and biking trails ensure an exceptional visit.



National Geotope "Porphyrfächer".



www.geopark-wlt.de
 +49 6443 824614
 info@geopark-wlt.de

Stöffel Park industrial monument, Herbslabyrinth show cave, Grube Bindweide visitor mine, GeoRoute & Discovery Tour "Basalt & Non-ferrous Metals", GeoView Mensfelder Kopf, National GeoTope Unica-Bruch

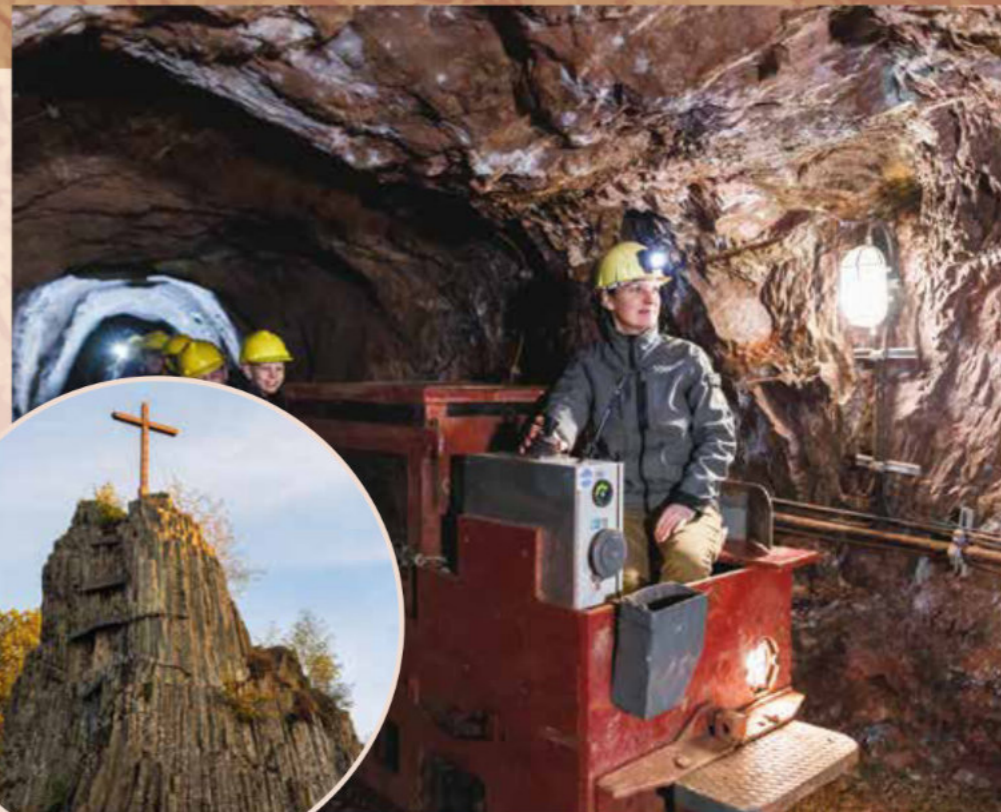
Geopark of
raw materials



Grube Fortuna visitor mine, Solms-Oberbiel.

GEOPARK Westerwald-Lahn-Taunus

Impressive natural landscapes, adventurous industrial sites and imposing cave systems—in almost 4,000 square kilometers visitors can actively experience 400 million years of Earth history and over 2,500 years of mining tradition. Treasurehunters in the Geopark do not find diamonds or gold—but rich deposits of iron ore, basalt, slate, mineral water, clay, limestone and the renowned Lahn marble. More than 100 GeoTopes, GeoPoints, GeoInformation centers, GeoViews and GeoRoutes offer the opportunity to delve deeply into the dynamic history of the Earth and the vibrant industrial heritage of the region.



National GeoTope Druidenstein, Herkersdorf.

National GeoTope Kistalhöhle Kubach, Weilburg-Kubach.



GEPARK

VULKANREGION
VOGELSBERG



-  www.geopark-vogelsberg.de
-  +49 6044 96693-0
-  geopark@vogelsberg-touristik.de
-  Vulkaneum, Vogelsberg garden, Art Tower Mücke, nature & info center Hoherodskopf, NIZA Amöneburg, MUNA Museum Grebenhain, Ore Trails, historic buildings of basalt



Geotope and natural monument Bilstein.

Geopark Vulkanregion Vogelsberg

Rustic, legendary and unique – at first glance, the explosive past of this now idyllic region may not be apparent. Bizarre rock formations, solidified lava flows and lakes, former volcanic vents and over 200 geosites tell the story of the region's fiery past. Earth history, but also picturesque half-timbered towns and species-rich nature, can be discovered on tours through the Vogelsberg.

The largest contiguous volcanic area in Central Europe, consisting of countless individual volcanoes, offers an exciting journey through the heart of Hesse.



Traveling on Europe's largest volcano field!

Grabengasse in Alsfeld.

The vaulted cellar beneath Herbstein's city wall.



Exploring the land of maars and volcanoes

Morning mist over the Daun Maars.

Nature and Geopark Vulkaneifel

For millions of years, the elements – fire, water, air and earth – have been in fateful conflict, giving the Eifel its unique and characterful profile. Even today, the primal forces of its origins are still visible and always perceptible.

In addition to unique geosites and special habitats, the Vulkaneifel is home to diverse landscapes which, thanks to their primeval beauty, are enchanting and invite you to experience them: Wander through meadows and forests, climb rocks and cross streams, taste springs and life!



On the banks of the Weinfeld Maars.



The Buchenloch cave on the leisure path Gerolstein Eight.

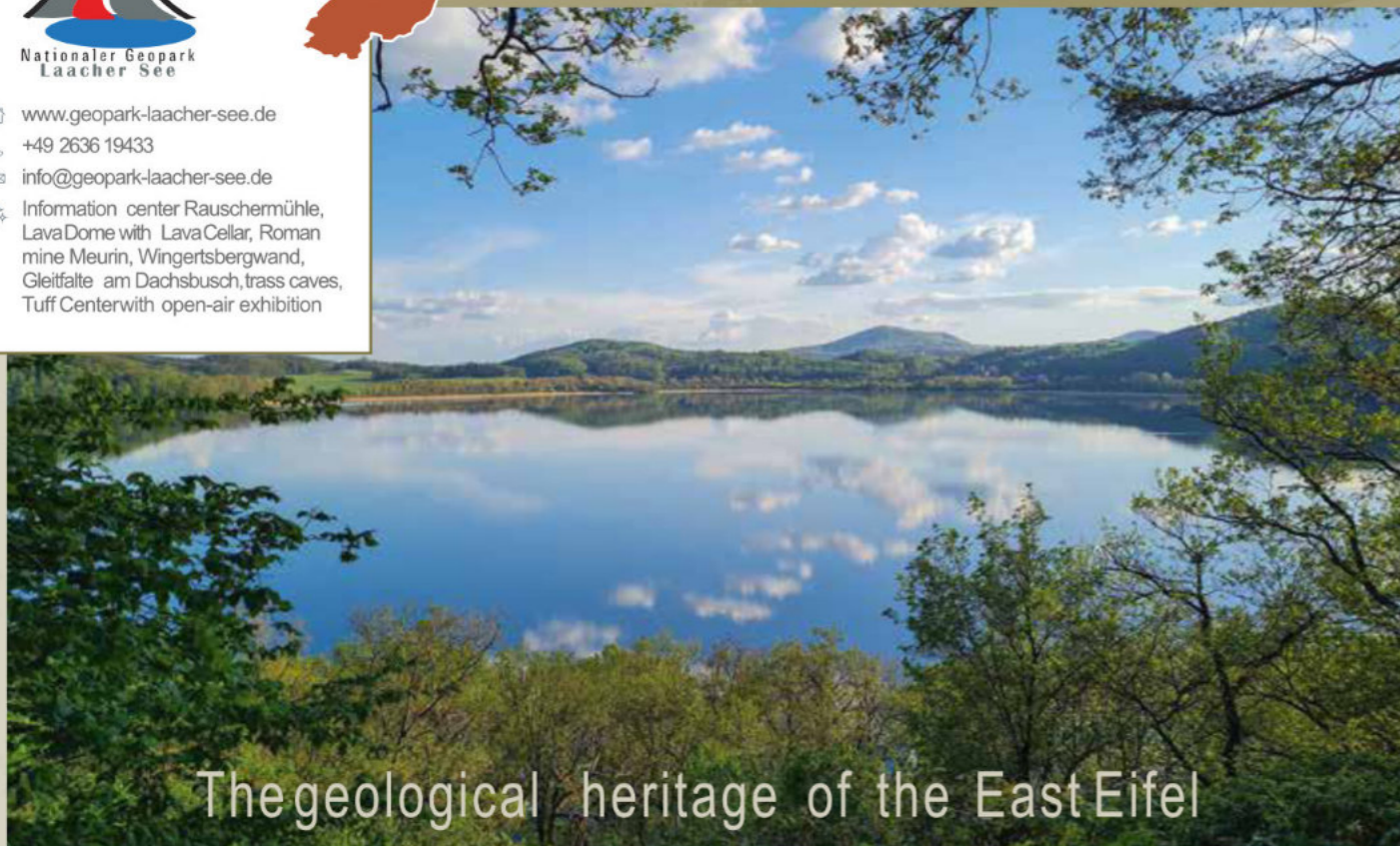


Nationaler Geopark
Laacher See

14



-  www.geopark-laacher-see.de
-  +49 2636 19433
-  info@geopark-laacher-see.de
-  Information center Rauschermühle,
Lava Dome with Lava Cellar, Roman
mine Meurin, Wingertsbergwand,
Gleitfalte am Dachsbusch, trass caves,
Tuff Center with open-air exhibition



The geological heritage of the East Eifel

The Laacher See – Starting point of the German Volcano Route.

Geopark Laacher See

At the heart of the Geopark, the eponymous lake, Laacher See, attests to one of the most powerful volcanic eruptions in Central Europe. In the East Eifel, a geologically young volcanic field of around 100 volcanoes, almost every mountain tells of its explosive formation. Raw materials of volcanic origin have been mined since Roman times and are still extracted today, so that in numerous outcrops and quarries, windows have been cut into the volcanoes or their lava flows, as if they were made especially for curious onlookers. There is much to discover about the geological and cultural history of volcanism on geo-paths and routes, hiking and cycling trails, as well as in visitor mines and museums.



The Wingertsbergwand, a pumice and tuff wall up to 60 meters high.



The deeply incised Steinach Valley with "Steinachklamm" gorge.

Geopark Schieferland

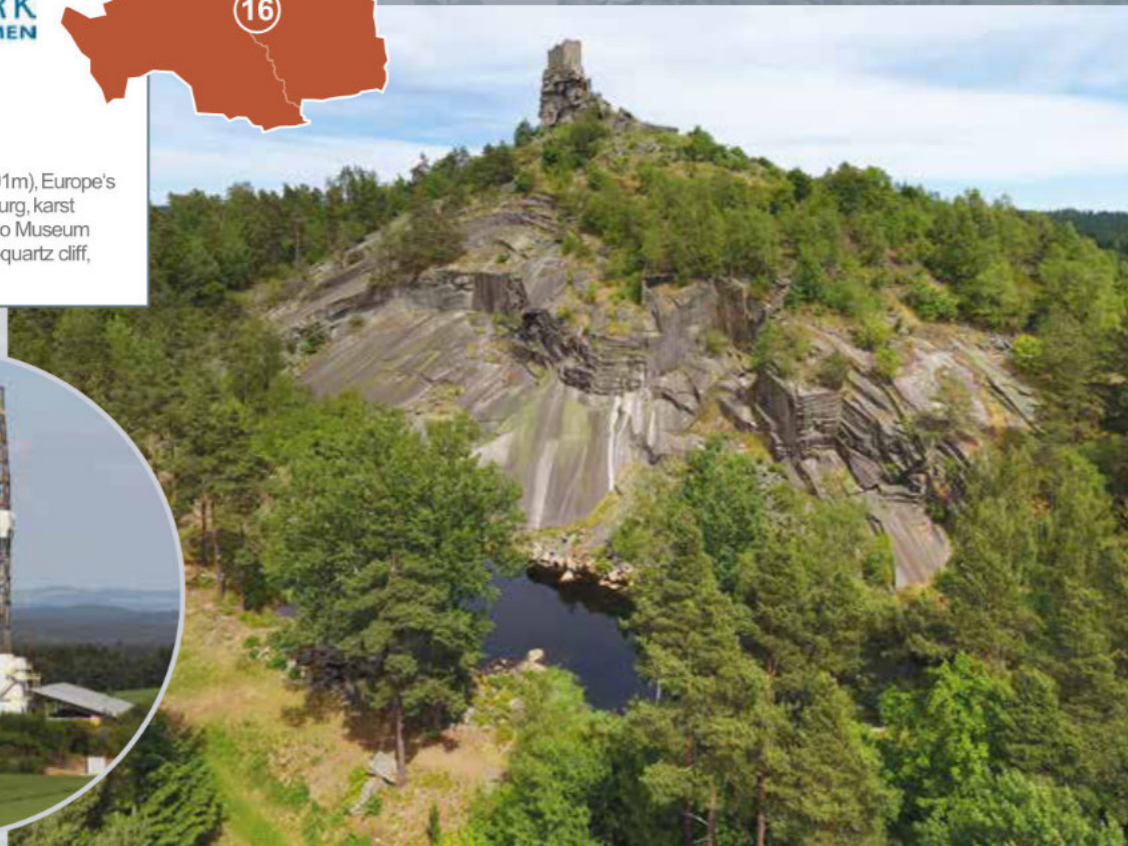
In the Geopark Schieferland, everything revolves around the blue "gold" of slate, both above and below the ground. The artistic, black-blue slate roofs of quaint villages provide a very special charm. The concentration of historic slate quarries on both sides of the Bavarian-Thuringian border bears witness to the once flourishing, worldwide sale of the raw material as roofing slate, slate slabs and roofing art. The floristic wealth of the Geopark is also exceptional, with mountain meadows particularly rich in herbs and splendidly colorful. The decisive influence of geology on the landscape, nature, history and people can be directly experienced everywhere.



Technical monument "Historical Slate Mining Lehesten".



 www.geopark-bayern.de
 +49 9602 9398166
 info@geopark-bayern.de
 Continental deep boring (9,101m), Europe's largest rock labyrinth Luisenburg, karst landscape Pottenstein, Volcano Museum Parkstein, Porzellanikon, rose-quartz cliff, Eger Rift



A look into the depths— Continental deepboring (Kontinentale Tiefbohrung KTB). Flossenbürger Schlossberg— National geotope and Germany's most accessible granitic dome.

GEO PARK Bayern-Böhmen

The cross-border Geopark is one of the largest in Central Europe and includes vacation regions such as the Fichtelgebirge, Upper Palatinate Forest and Franconian Switzerland in Bavaria, as well as the Western Ore Mountains and Kaiserwald in the Czech part of the Geopark. A well-developed network of hiking trails, Geopark routes and GEO tours leads to fascinating geological features, important sites in mining and cultural history and the former center of European porcelain. The "journey into the center of the Earth" is one through millions of years, into unique natural landscapes, a lively volcanic region and the Bavarian-Bohemian spa center. Jules Verne would be amazed!



Journey to the Center of the Earth

Blockmeer Haberstein on the Schneeberg with view of the Ochsenkopf in the Fichtelgebirge.



 www.geo-naturpark.de
 +49 6251707990
 info@geo-naturpark.de
 Messel Pit & Lorsch Abbey UNESCO World Heritage Sites, Mathildenhöhe Darmstadt & Limes, Sea of Rocks in Lautertal, Stalactite Cave Buchen, Environmental Training Center Schatzinsel Kühkopf, & more



Between granite and sandstone –
Continents in motion

The Sea of Rocks in Lautertal: Witness to a continental collision 340 million years ago.

Geo-Naturpark Bergstraße-Odenwald

The Geo-Nature Park Bergstraße-Odenwald spans 3,800 km², offering deep insights into 500 million years of dynamic Earth history, world-class cultural treasures and special natural experiences. From the ancient meanders of the Rhine to the Messel Pit UNESCO World Heritage Site with its unique fossils, from the Odenwald with its mighty granite and sandstone formations to the caves and sinkholes of the Bauland, the region invites you to make extraordinary discoveries. Those who want to delve deeper will enjoy the information centers, can explore Geopark trails and geosites or go on a tour with the rangers.



Out and about in the Geo-Nature Park Bergstraße-Odenwald.



GEOPARK RIES
Europa's best preserved Meteorite Crater



 www.geopark-ries.de
 +49 906 746030
 info@geopark-ries.de
 Geopark Info-Centers in Nördlingen, Oettingen & Treuchtlingen, themed hiking trails such as Ries Panorama Trail & Shepherd's Way, Adventure Geotopes with Nature Trails, e.g., Lindle & Kühstein, guided tours



Europe's Giant Meteorite Crater

View over the Ries Crater.

Geopark Ries

The Geopark Ries is characterized by the Nördlinger Ries impact crater, Europe's best preserved meteorite crater. This mighty crater is a geological marvel of the highest order. The "cosmic catastrophe" created a new type of rock called Suevite and, to this day, shapes the region. Themed hiking trails and the "From Crater to Crater" bike path lead to geological, historical and natural highlights. "Windows into the Earth" offer an exciting journey through time: The Adventure Geotopes in the Geopark Ries allow otherwise hidden glimpses into the Earth's interior.



Hexenfelsen ("Witches' Rock") on the Marienhöhe in Nördlingen.

Thelpf – former Celtic princely seat.



- 🏠 www.geopark-alb.de
- ☎ +49 7394 24870
- ✉ info@geopark-alb.de
- 🗨 Caves, karst landscape, springs, volcanic formations, meteorite crater, famous fossil finds, castles & palaces, Ice-Age art, UNESCO World Heritage Sites & Biosphere Reserve.



Discover Experience Understand

View of the breathtaking landscape at the Albrauf near Bad Urach.

Geopark Schwäbische Alb

The Swabian Alb is characterized by its typical light-colored limestone. The cycle of rain and limestone dissolution has formed a fascinating karst landscape with rock-lined valleys, countless caves, turquoise spring pools and bizarre waterfalls. The rock was already a valuable resource for Ice-Age humans, who used the Jurassic chert found here as a tool to carve small ivory artworks, some of which remain preserved in caves to this day. The fossils from the Jurassic sea are also world-famous. Rock, landscape, history and culture are inextricably linked on the Swabian Alb.



Karst spring Blautopf.

An impressive work of erosion: The Upper Danube Valley.

Geoparks' conservation mandate: Sustainably preserve Earth & nature



Our Earth is in constant motion, impacting landscape, nature and humanity. We are a part of fascinating Earth history, spanning millions of years, which is visible in geosites like rock formations, quarries and mines. Geosites are windows into our geological past, preserving former landscapes, environmental conditions and living worlds. Like pieces of a large puzzle, they help us reconstruct our planet's past and thereby understand the causes and effects of significant change processes.

Traces of human activity, such as archaeological sites, historical buildings, industrial heritage, documents and records, as well as preserved traditions and customs, complement the picture of our own past. Geoparks bridge these themes with engaging and informative offerings on geology, nature, culture, education and tourism.

They preserve and communicate geological heritage, raise awareness of the importance of protecting our environment and create a sense of responsibility for our living space and our planet. By combining this knowledge, geoparks shape the present and develop a sustainable future for the next generations. Geoparks achieve this with a large network of regional and international partners.

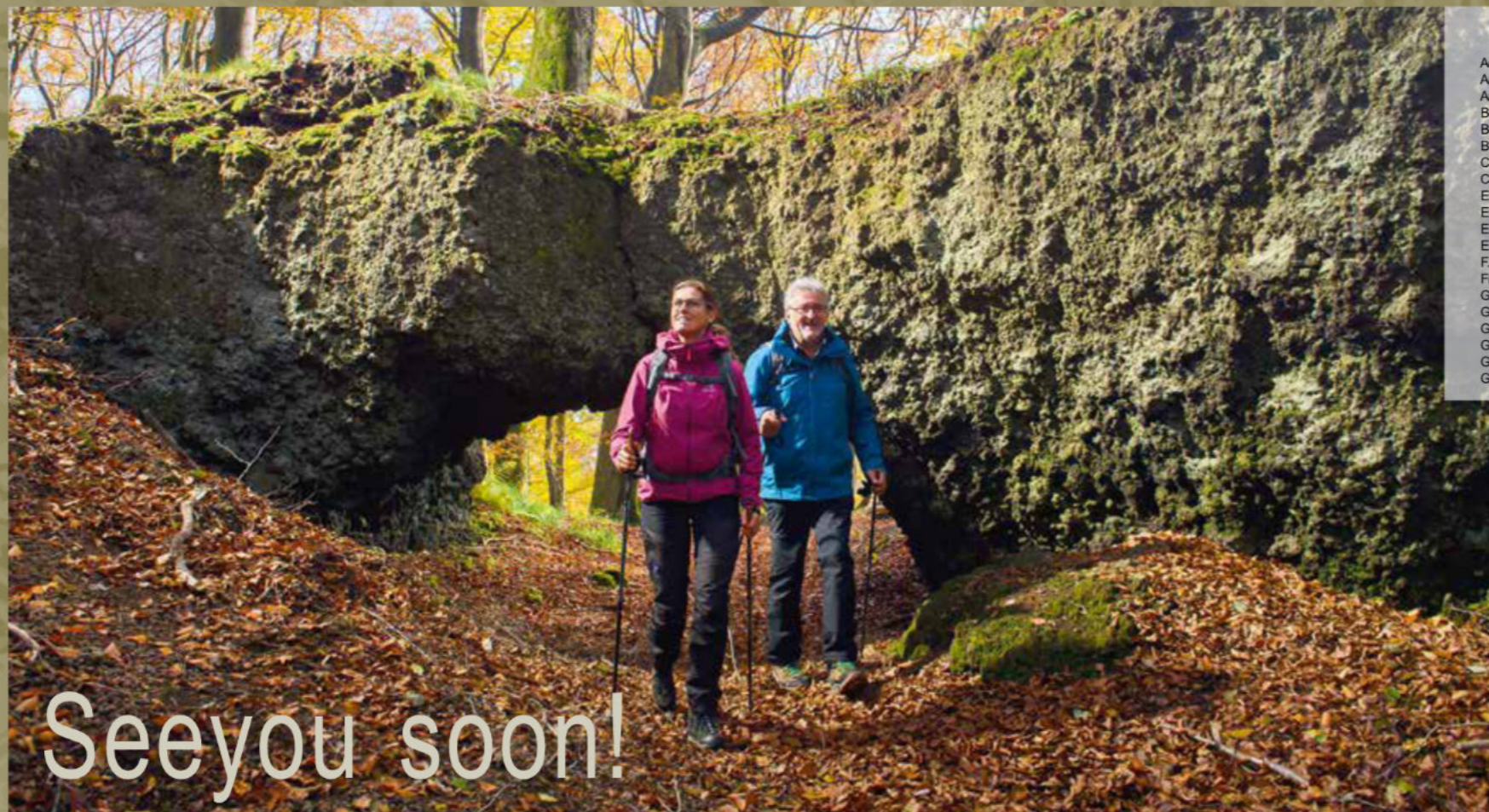


Develop and prepare for the future



Together with many network partners, geoparks make a valuable contribution to the positive development of their regions. They link geological heritage with touristic, economic and cultural potential, thus becoming creative catalysts for diverse and often innovative projects. The primary principle is to preserve nature's treasures so that future generations can also view the fascinating history of our planet Earth and understand nature's delicate balances. Geoparks are thus committed to the sustainability goals and core messages (people, planet, prosperity, peace and partnership) of the United Nations Global Agenda 2030.





See you soon!

ImageCredits

Adrian Liebau: 21M	Geopark SachsensMitte: 28	Naturpark Frankenwald & AnjaWunder: 38
AnjaWunder: 38, 39L	Geopark SchwäbischeAlb/Dominic Lars: 46	Peter Radke, LMBV: 24L
Archiv Barbarossahöhle: 21R	Geopark SchwäbischeAlb/Gregor Lengler: 47L	Peter Rohde: 27L
Bernhard Volmer: 13R	Geopark SchwäbischeAlb/Reiner Enkelmann: 7M, 47R	PetraSchwing-Döring: 33R
Bernd Dönwald: 7R, 43L, 49M	Geopark-Trägerverein Braunschweiger Land- Ostfalen: 15L	R. Kubosch: 19L
Betriebsführung Dechenhöhle: 4R	Hartwig Wachsmann: 13L	RebeccaHeinze: 23L, 49R
Christian Schelauske: 21L	Heimat- und Verkehrsverein Rochlitzer Muldental e.V.: 23R	Regionalverband Harz/KlausGeorge: 14, 15R
ChristinaMarx: 32, 33L	JanBosch/Geopark WLT: Titel L, 4L, 5L, 5R, 7, 30, 31, 48R, 52	Robert Michael: 29L, 29R
Eifel Tourismus GmbH/Dominik Ketz: Titel R, 35R	JuttaWeber: 42	Sabine Heymann: 49L
Eifelballooning Junk: 34	Katrin Schüppel: 17L	Samuel Buscape: 2M
EikeTietz: 39R	Kerstin Fohler: 26R, 27R	Stadt Osnabrück: 12
Engelbert Wühr: 16	KristinaBehlert: 6R	Stephan Brauner: 26R
F. Spindler: 26	Margit Frauenreuther: 40R	TöleStudios, Iserlohn: 17R
Frank Schmidt: 22	Martin Ludwig: 20	Tourismuszentrale- Florian Trykowski: 41
GEOPARKBayern-Böhmen: 40L	Museum HausHövener: 19R	Tourismuszentrum Oberpfälzer Wald: 7L
Geopark Emsland: 10, 11M, 11R	Nancy Sauer: 25R	Vulkanpark GmbH/Martin Christ: 37R
Geopark GrenzWelten: 18	Natur- und Geopark TERRA.vita: 7ML, 6R	Vulkanregion Laacher See/Baumann: 36
Geopark Muskauer Faltenbogen: 25L	Natur- und Geopark Vulkaneifel GmbH,	Vulkanregion Laacher See/Neideck: 37L
Geopark Riese.V./Dietmar Denger: 45L, 45R	Klaus-Peter Kappest: 6L, 7MR, 8R, 8M, 35L, 48R, 50	WelterbeGrubeMessel gGmbH: 43R
Geopark Riese.V./Peter Herzog: 44		

Imprint

Publisher: Arbeitsgemeinschaft der deutschen Geoparks (AdG)
www.geoparks-in-deutschland.de

Design: CUBEWerbung GmbH

Printing: Druckerei Billig OHG
 Papieraus nachhaltiger Waldbewirtschaftung

The Arbeitsgemeinschaft deutscher Geoparks operates under the umbrella of the Geotopes and Geoparks Section of the German Geological Society – Geological Association (DGGV).



ARBEITSGEMEINSCHAFT
 GEOPARKS IN DEUTSCHLAND



www.geoparks-in-deutschland.de